

# Large Format VLS Series Lasers

LASER CUTTERS & ENGRAVERS



VLS Series safety features include Over Temperature Sensor with Audible Alarm, Safety Glass, Automatic Recognition of Accessories and 'Smart Technology' ULR Laser Cartridges which can be easily changed by the user. VLS Series Laser Systems are RoHS Compliant.

For LaserCAM 2D Design Software  
see pages 36 - 37



Choice of 2 colours

Large Format VLS Series Lasers are free standing laser units with a large working area. There are several models and power options available to accommodate a wide range of budgets and applications including cutting, deep engraving, precision scribing, decorative etching on wood plastic, fabric, leather, paper, rubber and also the marking of glass, ceramic, metal and stone.



## Large Format VLS Series Lasers

Optional equipment includes a Honeycomb Bed, Extraction Unit with integrated Air Assist Compressor, Rotary Fixture and High Density Focusing Optics. An optional Air Assist Back Sweep is available for use when cutting rubber.

VLS Series Lasers have a unique 'materials cutting' menu so there is no need to look-up power and speed settings - simply select the type of materials and thickness to be lasered and press the start button. Design and Print, it's as simple as that!

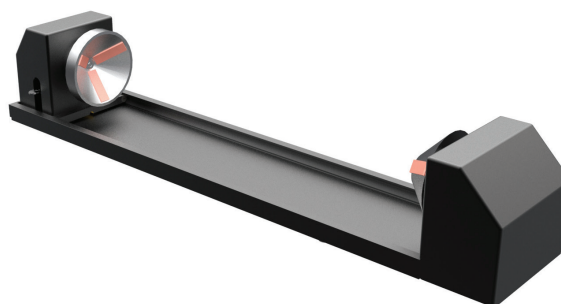
The recommended Extraction Unit for the Large Format VLS Series Lasers is the Denford AD-ORACLE Extraction Unit, which has integrated Air Assist, Pre Filter and HEPA Chemical Gas Filter, which can be visually monitored by a Filter Status Display.

### RECOMMENDED SYSTEM REQUIREMENTS

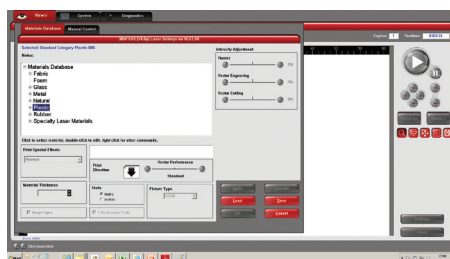
Dedicated PC: Windows 7, 8 & 10, 32-bit/64-bit  
1 available USB Port (2.0 or higher)

### ROTARY FIXTURE - OPTIONAL

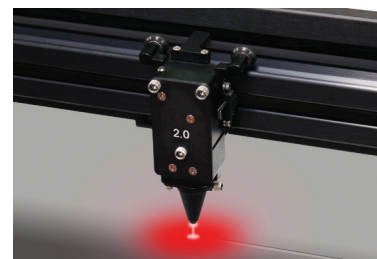
Permits laser processing around cylindrical surfaces up to 203mm (8.0") diameter and up to 406mm long.



AD-ORACLE  
Extraction Unit



Automatic Driver



Optics with Air Assist

MACHINE DETAILS	VLS4.75	VLS6.75	AD-ORACLE Extraction Unit
Machine Length	914mm	1118mm	430mm
Machine Depth	914mm	914mm	430mm
Machine Height	965mm	991mm	980mm
Machine Weight	122kg	147kg	90kg
Approx. Working Area	457 x 610mm	457 x 813mm	N/A
Laser Power Options	30, 40, 50, 60 or 75 Watts	30, 40, 50, 60 or 75 Watts	N/A
Volts	230 Volts	230 Volts	100 - 240 Volts
Amps	10 Amps	10 Amps	12.5 Amps
Exhaust Connections Dia.	101.6mm	2 x 101.6mm	75mm
Electrical Connection	13A Socket	13A Socket	13A Socket

### SAFETY INFORMATION

Class I safety enclosure for CO2 laser beam. Class IIIa for red laser pointer.