

# Router 6600/6600 Pro

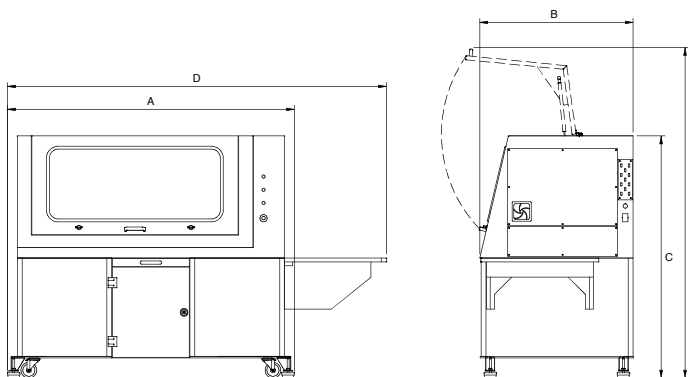
LARGE FORMAT, HIGH SPEED FLOOR-STANDING ROUTER



**QUALITY, PRECISION,  
MAINTENANCE FREE  
ROUTING**

For full details - See page 11

Router 6600 shown with optional computer support extension and integrated Dust Pro 100 (PC not included)



Machine Dimensions.

A large format, high speed Router, complete with built-in machine bench, offering large machining capacity (table size 1080 x 640mm) at an exceptional price. The Router 6600 / 6600 Pro is specifically designed for education and training and is ideal for cutting a range of resistant materials such as hard and soft wood, plastic, modelling foam, acrylic and prototyping material. In addition, the Router 6600 Pro can cut non-ferrous metals.



APPROVED

Ideal for use in conjunction with



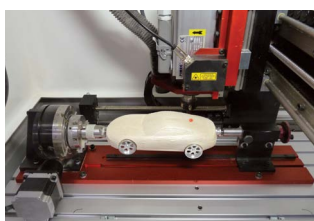
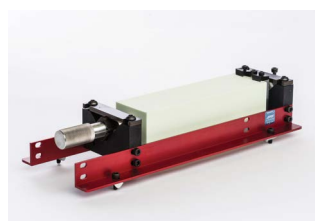
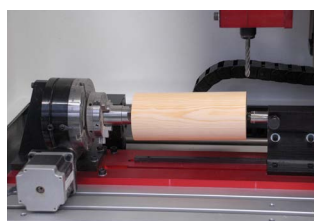
## Router 6600/6600 Pro

### THE ROUTER 6600/6600 PRO COME AS STANDARD WITH:

- VR CNC Milling Operating Software (PC not included)
- QuickCAM 2D Design Software (1 seat)
- Machine Bench
- Aluminium T Slot Table
- Outlet for Dust Extraction System
- Workholding Clamps
- Installation and Instruction Manuals
- USB Connection

### OPTIONAL EQUIPMENT INCLUDES:

Large Format Vacuum Bed, Vacuum Pads, F1 in Schools Car Manufacturing Fixture, 4th Axis Programmable Rotary Fixture, 3D Scanning Attachment, Dust Extraction Unit, Computer Support Extension.



### RECOMMENDED SYSTEM REQUIREMENTS

Please refer to page 27.

### RECOMMENDED SOFTWARE PROGRAMS

All software necessary to control the Router 6600/ Router 6600 Pro is included. Also included is a seat of QuickCAM 2D Design - an easy to use 2D CAD package.

• 2D Designs: The VR Milling software can import DXF, DWG, EPS and Gerber files in addition to G & M code programs and as such will link with programs such as Techsoft 2D Design and CorelDraw.

• 3D Designs: To enable import of STL files from 3D design packages, QuickCAM Pro software is required (see pages 40 - 41).

MECHANICAL DETAILS	ROUTER 6600	ROUTER 6600 PRO
Machine Length (A)	1825mm - 71.85in	
Machine Depth (B)	985mm - 38.78in	
Machine Height (C)	1540mm - 60.63in	
Length with Optional PC Arm (D)	2410mm - 94.88in	
Height with Door Open (E)	2110mm - 83.07in	
Machine Weight	430kg - 947.99lb	
Table Size	1080 x 640mm - 42.52 x 25.20in	
Travel X Axis	1000mm - 39.37in	
Travel Y Axis	600mm - 23.62in	
Travel Z Axis	110mm - 4.33in	
Beam Clearance	148mm - 5.83in	
Max. Spindle Speed	29000 rpm	24000 rpm
Non-Ferrous Metal Cutting	No	Yes
Spindle Speed Control	No	Yes
Spindle Speed Override	No	Yes
Max. Feed Rate	5000mm/min - 196.85in/min	
Max. 3D Profiling	4500mm/min - 177.17in/min	
Spindle Motor 110V Supply	800W - 1.07HP	1.0kW - 1.34HP
Spindle Motor 230V Supply	1.0kW - 1.34HP	
Axes Motors	Stepper	
Power Requirements	Single Phase, 230V - 8A / 110V - 10A	
Frequency	50/60 Hz	