

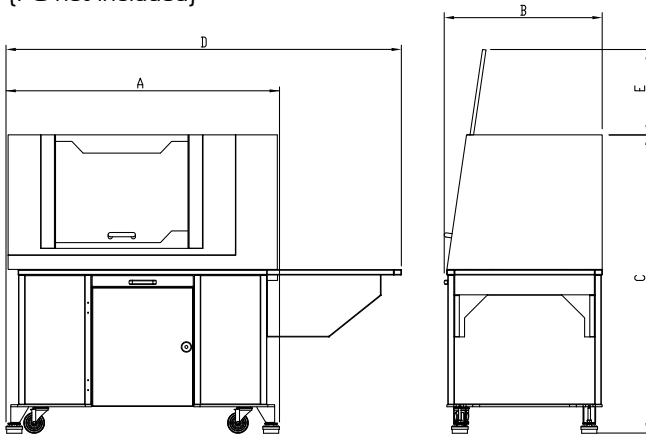
Turn 370 Pro

HIGH CAPACITY CNC LATHE

COMPLETE WITH
FLOOD COOLANT
AND INDUSTRIAL
CABINET BASE



Turn 370 Pro shown
with optional computer support extension
(PC not included)



Machine Dimensions.

A high capacity 2 axis CNC Lathe complete with flood coolant and industrial cabinet base and totally enclosed high-visibility interlocking guard, suitable for all levels of education and training. Programmable spindle speeds and feedrates make the Turn 370 Pro ideal for cutting a range of resistant materials such as wax, plastic, acrylic, free cutting alloys, aluminum and steel.



Turn 370 Pro

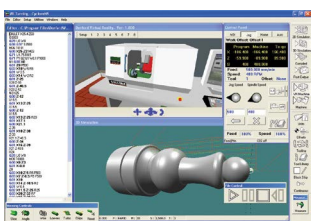
THE TURN 370 PRO COMES

AS STANDARD WITH:

- VR CNC Turning Operating Software (PC not included)
- QuickTURN 2D Design Software (1 seat)
- Flood Coolant and Industrial Cabinet Base
- Quick Change Toolpost and Holder
- Manual Self Centring 125mm 3 Jaw Chuck
- Installation and Instruction Manuals
- USB Connection

OPTIONAL EQUIPMENT INCLUDES:

8 Station Programmable Turret (supplied in lieu of Quick Change Toolpost), Pneumatic Chuck and Guard, Tail Stock and Automatic Lubrication System.



RECOMMENDED SYSTEM REQUIREMENTS

- 1 GHz Processor,
- 1 GB Memory,
- 32 GB Hard Disk,
- Microsoft Windows 7, 8 & 10,
- OpenGL Graphics Card, or built in Graphics, to support a minimum 1024 x 768 Screen Resolution, CNC machines require USB Connection.

RECOMMENDED SOFTWARE PROGRAMS

All software necessary to control the Turn 370 Pro is included. Also included is a seat of QuickTURN 2D Design - an easy to use CAD package.

MECHANICAL DETAILS	TURN 370 PRO
Machine Length (A)	1330mm - 52.36in
Machine Depth (B)	750mm - 29.53in
Machine Height (C)	1445mm - 56.89in
Length with Optional PC Arm (D)	1910mm - 75.20in
Open Door Height Above Machine (E)	385mm - 15.16in
Machine Weight	400kg - 881.85lb
Swing Over Bed	260mm - 10.24in
Swing Over Cross Slide	105mm - 4.13in
Distance Between Centres	370mm - 14.57in
Travel X Axis	200mm - 7.87in
Travel Z Axis	275mm - 10.83in
Max. Spindle Speed	3700rpm
Max. Feed Rate	3000mm/min - 118.11in/min
Spindle Bore	35mm - 1.38in
Spindle Motor	2.2kW - 2.95HP
Axes Motors	Stepper
Power Requirements	Single Phase, 230V - 10A / 110V - 16A
Frequency	50/60Hz
Electrical Socket	16A MCB Protected